

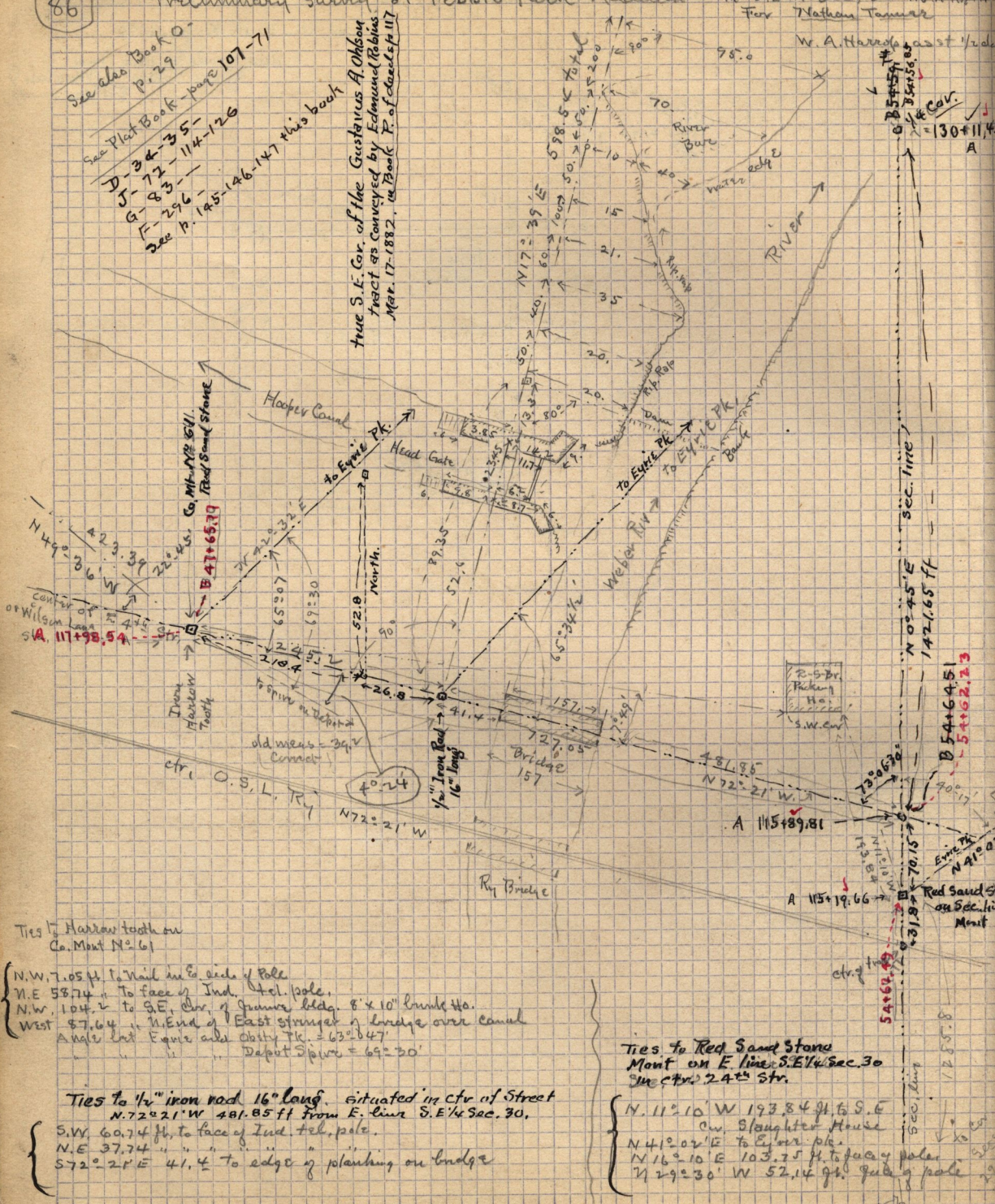
April 15 - 1911

86

Preliminary survey of Pebble Park Addition - in S.E. 1/4 Sec 30 T.6 N. R. 1 W. Fair Nathan Tanner

See also Book O - p. 29
See Plat Book - page 107-71
D-34-35
J-72-114-126
G-83
F-296
see p. 145-146-147 this book

True S.E. Cor. of the Gustavus A. Olson Tract as conveyed by Edmund Robins Mar. 17-1882, in Book F. of records p. 117



Ties to Harrow tooth on Co. Mont No. 61

- N.W. 7.05 ft. to Nail in E. side of pole
- N.E. 58.74 " To face of Ind. tel. pole.
- N.W. 104.2 " to S.E. Cor. of frame bldg. 8' x 10" brick Ho.
- West 57.64 " N. End of East stringer of bridge over canal
- Angle bet Equis and Obity Tr. = 63° 14'
- Deput Splice = 69° 30'

Ties to 1/2" iron rod 16" long, situated in ctr of Street N. 72° 21' W 481.85 ft from E. line S.E. 1/4 Sec. 30.

- S.W. 60.74 ft. to face of Ind. tel. pole.
- N.E. 37.74 " "
- S 72° 21' E 41.4 " To edge of polishing on bridge

Ties to Red Sand Stone Mont on E line S.E. 1/4 Sec. 30
See ctr. 24th Str.

- N. 11° 10' W 193.84 ft. to S.E. Cor. Slaughter House
- N. 41° 02' E To E. line pole.
- N. 16° 10' E 103.75 ft. to face of pole
- N. 29° 30' W 52.14 ft. to edge of pole